

Illinois Motor Vehicle Theft Prevention Council

2001 Annual Report



A private and public partnership
effectively combating motor
vehicle theft and
related crimes in
Illinois since 1991.



George H. Ryan,
Governor

Sam Nolen,
Chairman

To the Governor and the Members of the Illinois General Assembly:

The Council's partnership of the public and private sectors is effectively fighting vehicle theft in Illinois. I'm proud to present this annual report, which describes the challenges we've faced and documents the positive results we achieved this past year.

Vehicle theft in Illinois has declined by 25 percent since 1991, the year the Motor Vehicle Theft Prevention Act was enacted by the General Assembly. Between 1991 and 2000, the number of stolen vehicles decreased from 75,642 to 56,545. This is a decline of more than 19,000 – resulting in a savings of over \$127 million, based on FBI estimates.

The grant funds awarded by the Council have dramatically improved motor vehicle theft law enforcement by supporting multi-jurisdictional task forces, investigative teams, and other special efforts around the state. These programs have generated impressive results over the past 10 years:

- 14,811 criminal investigations initiated;
- 26,141 audits of vehicle-related businesses conducted;
- 8,010 persons arrested;
- 3,497 convictions obtained; and
- 21,433 stolen and contraband vehicles recovered worth nearly \$153 million.

The \$63 million granted by the Council from 1991 through 2001 has resulted in approximately \$280 million from recovered stolen vehicles and reduced theft rates - a return of more than \$4 for every dollar spent.

The Council's partnerships with the public and private sectors are effectively fighting vehicle theft in Illinois. I would like to thank the individuals who remain dedicated and committed to the Council's mission to decrease motor vehicle thefts in Illinois. I am proud to present this annual report documenting our accomplishments throughout 2001.

Very respectfully,



Sam Nolen, Chairman



Table of Contents

2001 Annual Report

State of Illinois	Council Members	4
George H. Ryan, Governor	Grant Review Committee Members	5
	About the Council	6
	2001 Financial Statement	8
Illinois Motor Vehicle Theft Prevention Council	Statistical Snapshots	9
Sam Nolen (Chairman)	2001 Programs Funded	10
<i>Director, Illinois State Police</i>	Participating Agencies	17
Ronald R. Brown,	Program Activity	18
<i>State Farm Insurance Companies</i>	Funding Authorized	19
Michael Burnside,	Trust Fund Overview	20
<i>Allstate Insurance Company</i>	2001 Trust Fund Contributors	21
Hon. Richard A. Devine,	The Illinois Motor Vehicle	
<i>State's Attorney of Cook County</i>	Theft Prevention Act	23
Terry Hillard, Superintendent,		
<i>Chicago Police Department</i>		
Linda Laurich,		
<i>American Family Insurance</i>		
Hon. Paul A. Logli,		
<i>State's Attorney of Winnebago County</i>		
Beau William Parrillo,		
<i>United Automobile Insurance Company</i>		
Donald L. Sauzek,		
<i>Country Companies</i>		
Charles Schofield,		
<i>Peoria County Sheriff</i>		
Hon. Jesse White,		
<i>Illinois Secretary of State</i>		

Illinois Motor Vehicle Theft Prevention Council

120 South Riverside Plaza, Suite 1016

Chicago, Illinois 60606-3997

(312) 793-8550

(312) 793-8422 (Fax)

(312) 793-4170 (TDD)

<http://www.icjia.state.il.us/mv>

Printed by the authority of the state of Illinois,
printing order number 02-240. 1200 copies at a
cost of \$2.65 per copy, July.

Grant Review Committee

Kenneth Bouche (Chairman),

Illinois State Police

Steve Aguilar,

State Farm Insurance Companies

Paul Bluethner,

Allstate Insurance Company

Tom Hennelly,

Cook County State's Attorney's Office

Brad DeMuzio,

Illinois Secretary of State

Department of Police

Council Staff

Gary Kupsak, Program Director

Richard Novak, Program Monitor

Jim Oas, Accountant

Stacy Bowling, Program Analyst

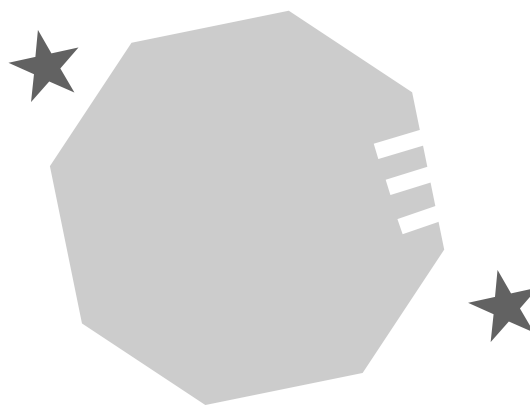
Patrick Kelly, Vehicle Acquisition Specialist

Illinois Criminal Justice Information Authority

Peter B. Bensinger, Chairman

Candice M. Kane, Ph.D., Executive Director

Robert P. Boehmer, General Counsel



The 2001 Illinois Motor Vehicle Theft Prevention Council



Sam Nolen (Chairman),
Director Illinois State Police

Mr. Nolen, a 40-year veteran of the State Police, began his professional career as a state trooper. He served as acting director of the Illinois State Police from January to March 1991, and became director in January 1999.



Ronald R. Brown
State Farm Insurance Companies

Mr. Brown has 30 years of service with State Farm Mutual Automobile Insurance Company. He has served the Council from 1996 through November of 2001.



Michael Burnside
Allstate Insurance Company

Mr. Burnside has been employed with Allstate Insurance Company since 1974. He currently serves as the Community Reinvestment Activities officer for Allstate Bank. Mr. Burnside was appointed to the Council in November 1998.



Hon. Richard A. Devine
Cook County State's Attorney

Mr. Devine was elected Cook County State's Attorney in 1996. Mr. Devine has served as president of the Chicago Park District and as assistant to Chicago Mayor Richard J. Daley. He has also served on numerous commissions, boards, and committees in the legal profession.



Terry G. Hillard
Superintendent, Chicago Police Department

Mr. Hillard has over 33 years of service with the Chicago Police Department. From 1979 to 1984, he was assigned to the security detail of Chicago Mayors Jane Byrne and Harold Washington. He was Commander of the 6th District from 1991 to 1993, and served as Deputy Chief of Area 2 from 1993 to 1995. He was appointed chief of the Detective Division in 1995. Mayor Richard M. Daley appointed Mr. Hillard as superintendent of police in 1998.

Linda Laurich
American Family Insurance

Ms. Laurich was appointed to the Council in 1998. Ms. Laurich is the government affairs counsel for American Family Insurance. Her responsibilities include lobbying the Illinois General Assembly and serving as a corporate liaison to the Illinois Department of Insurance and the National Association of Insurance Commissioners.



Hon. Paul A. Logli
Winnebago County State's Attorney

Mr. Logli was elected Winnebago County State's Attorney in 1986. He has been elected to the office four times, and was appointed to the Council in 1993.



Beau William Parillo
United Automobile Insurance Company

Mr. Parillo is Vice President of Claims for United Automobile Insurance Company. He was appointed to the Council in 2000.



Donald L. Sauzek
Country Companies

Mr. Sauzek has been a Council member since 1996. He is manager of material damage claims for Country Companies, directing all aspects of physical damage claims in 10 states.



Charles Schofield
Peoria County Sheriff

Mr. Schofield was elected Sheriff in 1994. Prior to being elected Sheriff, he served as Director of the Multi-County Enforcement Group, a narcotics task force. Mr. Schofield was appointed to the Council in 2000.



Hon. Jesse White

Illinois Secretary of State

Mr. White was elected the 37th Illinois Secretary of State in 1998. Prior to being elected as the Illinois Secretary of State, Mr. White served as Cook County Recorder of Deeds. He was elected to the position in 1992 and re-elected in 1996. Before being elected as Recorder of Deeds, he served in the Illinois General Assembly for 16 years. Mr. White was chairman of the Illinois House Committee on Human Services and was an active member of the Education Committee and select committees on children and aging.



Robert Howlett, Director of the Secretary of State Department of Police, is Mr. White's designee to the Council.

Grant Review Committee Members

Members of the Grant Review Committee are appointed by members of the Council. The Grant Review Committee reviews all grant proposals, budgets, and any other information that must be brought before the Council.

Assistant Deputy Director Kenneth Bouche, Chairman

Illinois State Police

Assistant Deputy Director Kenneth Bouche represents Council Chairman Nolen.

Steve Aguilar

State Farm Insurance Companies

Mr. Aguilar represents the State Farm Insurance Companies.

Paul Bluethner

Allstate Insurance Company

Mr. Bluethner represents Council member Michael Burnside on the Committee.

Tom Hennelly

Cook County State's Attorney's Office

Mr. Hennelly currently represents Cook County State's Attorney Richard A. Devine.

Paula Daleo

Cook County State's Attorney's Office

Ms. Daleo represented Cook County State's Attorney Richard A. Devine from 1999 to September of 2001.

Brad DeMuzio

Illinois Secretary of State Department of Police

Mr. DeMuzio represents Secretary of State White.

Public Information Committee

During the fall of 2001, the Grant Review Committee created the ad hoc Public Information Committee to supplement activities previously undertaken by the Illinois Anti-Car Theft Committee's (I-ACT) Publicity Sub-Committee. The Public Information Committee meets on a quarterly basis and provides the Grant Review Committee with recommendations on how to provide the residents of Illinois and the law enforcement community with important and timely information on motor vehicle theft prevention news and activities. The committee is chaired by Ms. Kim Donahue of the Illinois State Police and consists of representatives from several of the Council's task forces, the National Insurance Crime Bureau, Allstate Insurance, State Farm Insurance, AAA Chicago Motor Club Insurance, Chicago Crime Stoppers, and Illinois Secretary of State Department of Police.

Vehicle theft in Illinois has declined by 25 percent since 1991, the year the Motor Vehicle Theft Prevention Act was enacted by the General Assembly.



Motor Vehicle Theft Prevention Tips

1. Always lock your vehicle and take the keys.
2. Never leave the vehicle running and unattended.
3. Never leave a spare set of keys in the vehicle.
4. Always park in a well-lighted area.
5. If you have a garage, use it.
6. Keep all valuables and packages out of sight.
7. Use auto theft deterrents.

About the Council

According to the Illinois State Police, 83 percent of the vehicles reported stolen in 2001 were recovered.

In 1991, the General Assembly established the Illinois Motor Vehicle Theft Prevention Council, an 11-member coalition made up of State's Attorneys, law enforcement personnel, and insurance industry officials. The Council's mission is to reduce vehicle theft, insurance fraud, and motor vehicle theft-related crimes. The Council holds quarterly meetings to ensure successful collaboration between the participating entities and to update and discuss planning strategies and objectives for fighting vehicle theft throughout Illinois.

The Illinois Motor Vehicle Theft Prevention Act requires insurance companies to pay into a special trust fund \$1 for each private passenger automobile insured for physical damage coverage. This amount, collected and administered by the Council, totals approximately \$5.6 million each year. Funds are designated primarily for law enforcement programs that increase the investigation and prosecution of vehicle theft-related crimes.

Vehicle thefts reduced

The State of Illinois has experienced an increase in population throughout the 1990s. The 2000 population of Illinois was 12,419,293, an increase of 290,923 from 1999 population estimates.¹ The Illinois Secretary of State's office reported that approximately 9.3 million vehicles were registered in Illinois during 2000.

The number of vehicle thefts in Illinois declined 25% from 1991 to 2000.² During this same time period the motor vehicle theft rate in Illinois decreased 31%, from 656 to 455 offenses per 100,000 population. In 2000, Illinois reported 56,545 motor vehicle theft offenses. There was a 2.7% decrease in the motor vehicle theft offense rate in Illinois when comparing 2000 to 1999.

Urban counties experienced a 4.9% decrease in the motor vehicle theft rate, while rural

counties reported a 1.3% increase in the rate. In 2000, Cook County reported 45,083 motor vehicle thefts, representing 80% of Illinois' total.³ The 2000 motor vehicle theft rate for Cook County was 839 per 100,000 population, a decrease of 2.6% from 1999.⁴ In Illinois more than 570 fewer vehicles were stolen during 2000 than in 1999, which equates to approximately \$3.8 million saved.⁵

Vehicle theft arrests

From 1991 to 2000, the number of reported vehicle theft arrests in Illinois increased 18% from 10,846 to 13,290.⁶ Also during this time period, the vehicle theft arrest rate increased 12% from 94 to 107 arrests per 100,000 population.⁷ In counties served by a Council-funded auto theft task force, the arrest rate has increased by 36% since 1991. When comparing 1999 to 2000, Illinois experienced a 3% decrease in the number of vehicle theft arrests, from 13,697 to 13,290. During this same time period the vehicle theft arrest rate also decreased by 5%, from 113 to 107.

Stolen vehicles recovered

According to the Illinois State Police, 83 percent of the vehicles reported stolen in 2001 were recovered. Of those vehicles that were recovered, 75 percent were recovered within 14 days.⁸

*Prison sentences for motor vehicle theft*⁹

The Illinois Department of Corrections (IDOC) reported that the average sentence length for motor vehicle theft decreased in 2000, falling by nearly four months from 1999 to 2000. Also during this time, the number of sentences handed down decreased by approximately 2%. When looking at the offenses identified by IDOC for which offenders were most frequently released in 2000, motor vehicle theft offenses ranked 10th out of the top 25 offenses.

1 U.S. Census Bureau.

2 Illinois State Police, Uniform Crime Reports 2000.

3 Illinois Uniform Crime Reports. Auto Theft Rate = (# of reported auto thefts X 100,000)/ estimated population.

4 See Note 2.

5 The FBI estimates that the average value of a stolen car at the time of theft is \$6,682. Crime in the United States 2000. Washington, DC.

6 See Note 2.

7 Illinois Uniform Crime Reports. Auto Theft Arrest Rate = (# of reported arrests X 100,000)/ estimated population.

8 Law Enforcement Agencies Data System (LEADS) as of February 6, 2002.

9 IDOC Statistical Presentation 2000. Illinois Department of Corrections, November 2001.

Parts market audited

Council-funded programs have successfully attacked the ‘black market’ for stolen vehicles and contraband parts. Special auditing teams inspected numerous salvage yards, repairers, and scrap processors for compliance with regulations governing record-keeping of vehicle and vehicle part transactions. The teams have analyzed the forms that track essential parts from buyers and sellers to determine whether the purchases were for other than legitimate rebuilding purposes. In 2001, more than 2,096 audits of vehicle-related businesses were conducted, bringing the statewide total to approximately 26,096 since 1992. The audit teams have recovered an estimated \$14 million in stolen and contraband vehicles since 1992.



The Illinois Motor Vehicle Theft Prevention Council banner.



An Illinois Motor Vehicle Theft Prevention Council meeting in Springfield.



Staff of the Illinois Secretary of State, Department of Police, Special Audit Team.



A traffic stop leads to a recovered stolen auto.



Cook County State’s Attorney’s Vehicle Theft Prosecution staff.

2001 Financial Statement

Motor Vehicle Theft Prevention Trust Fund
 Statement of Revenues, Expenditures, and Fund Balance for
 State Fiscal Year 2001 (July 2000 to June 2001)

REVENUES:

Insurance Company Payments	\$5,762,127
Interest Income	\$ 343,728
Transfer to Trust Fund	\$ 11,226
TOTAL	\$6,117,081

EXPENDITURES:

Administrative	\$254,219
Programs	\$4,901,941
TOTAL	\$5,156,160

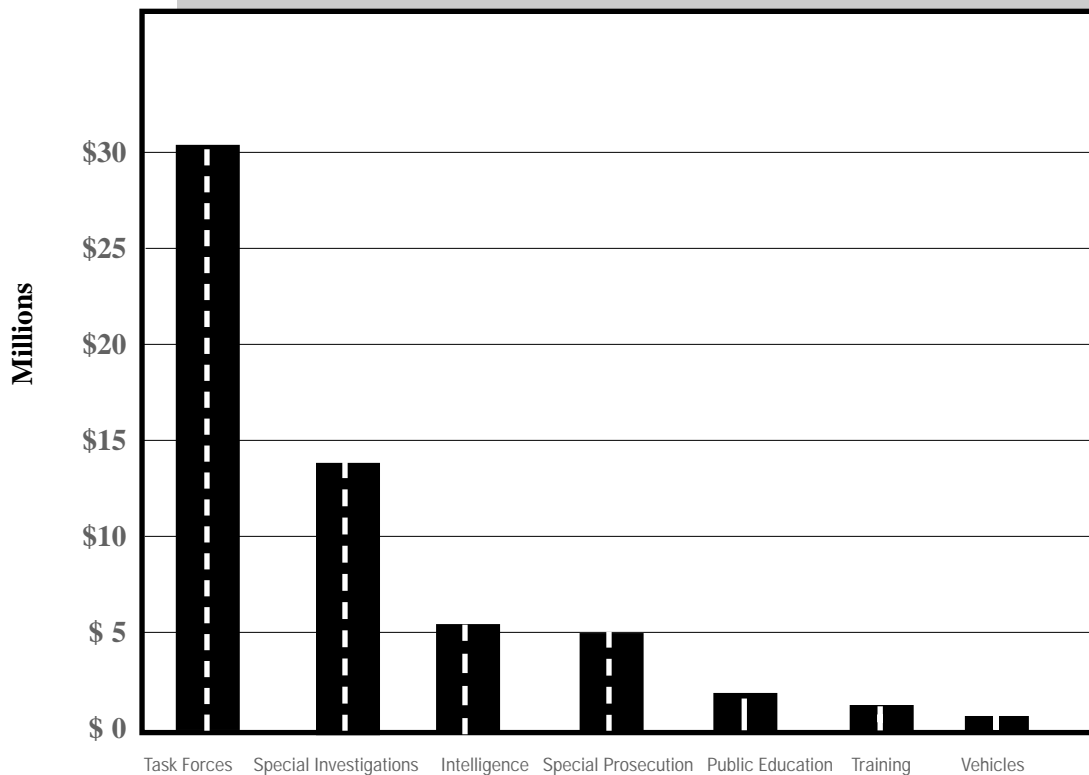
BALANCE:

BEGINNING BALANCE	\$6,288,047
ENDING BALANCE	\$7,248,968



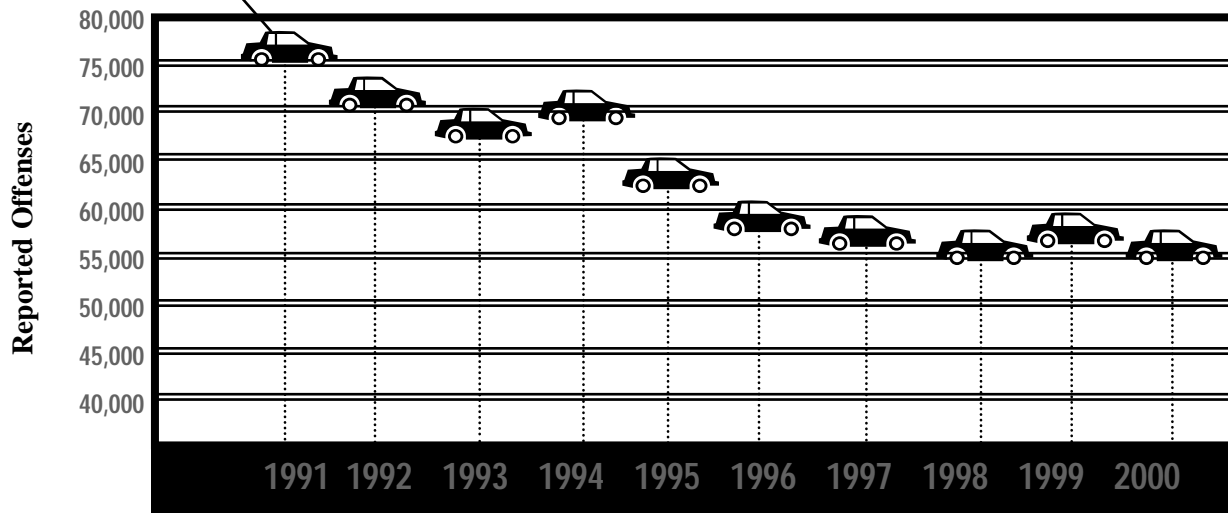
Statistical Snapshots

Council Funding by Program Type 1992-2001



Motor Vehicle Thefts in Illinois 1991-2000

The Motor Vehicle Theft Prevention Act was enacted in 1991.



Source: Illinois Uniform Crime Reports, 2000.

2001 Programs Funded

The Council funded 13 programs in 2001. The purposes, activities, and results of each program are summarized on the following pages. Awards were made for calendar year 2001, based on the strategy adopted by the Council.

The program descriptions on the following pages include a summary of program expenditures during 2001. Expenditures are divided into six categories:

Personnel—includes salaries, social security, and fringe benefits for program staff.

Equipment—includes computers, communication devices, and other equipment with a cost greater than \$50.

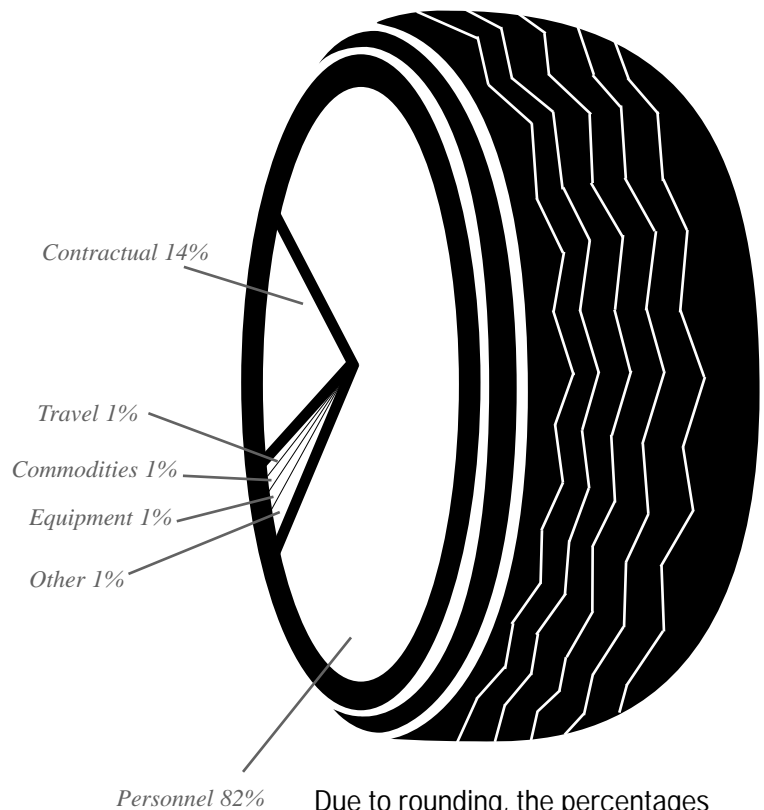
Commodities—includes consumable supplies (such as office supplies) and equipment costing less than \$50.

Travel—includes lodging, food, and transportation expenses incurred by program staff while conducting official program-related business.

Contractual—includes facility costs, utilities, telephone service, equipment rentals, and wages for hourly personnel.

Other—includes any costs not covered by the above categories.

Program Expenditures 2001



Due to rounding, the percentages of expenditures by category may total more than 100 percent.



Illinois State Police Academy in Springfield, site of Motor Vehicle Theft Prevention Training.



An altered "VIN" plate.

Law Enforcement Programs

The Council's seven vehicle theft task forces consist of officers from both local and state law enforcement agencies. The officers work to identify and apprehend individuals and criminal organizations involved with motor vehicle thefts and motor vehicle theft-related offenses. The task forces' multi-jurisdictional, cooperative approach maximizes their ability to investigate and prosecute auto theft throughout Illinois. The services of the task force are available to all law enforcement agencies within the jurisdictions in which they operate. Each task force is required by the Council to report monthly data reflecting the number of investigations, arrests, and cases referred for prosecution.¹⁰ The task forces also report the number of vehicle theft convictions,¹¹ which reflects the activities of the prosecutor assigned to the individual task force. The task force officers' responsibilities also include the recovery of stolen vehicles, which produces a significant financial return for the insurance companies in Illinois.

In addition to the above responsibilities, the task forces are involved in public awareness and educational activities. The task forces also provide VIN etching sessions for their local communities. VIN etching marks a vehicle's window with its own vehicle identification number making the vehicle easier to trace when stolen.

DUPAGE COUNTY AUTO THEFT TASK FORCE

Grantee: DuPage County Sheriff's Office

Type of Program: Multi-jurisdictional vehicle theft task force

Amount Awarded for 2001: \$409,553

Expenditures

Personnel-85.5%	Commodities-1.1%
Travel-0.6%	Contractual-10.5%
Other-2.3%	

The DuPage County Auto Theft Task Force, known as BATTLE (Beat Auto Theft Through Law Enforcement), operates in DuPage County, located in northeastern Illinois. The

task force addresses vehicle theft and fraud through a variety of vehicle theft related resources. In a coordinated effort to identify and arrest offenders, the officers work with numerous agencies, such as Crime Stoppers programs, insurance companies, and local, county, and federal police agencies.

In 2001, BATTLE conducted 133 investigations resulting in 95 arrests. The work of the BATTLE officers led to 44 convictions in 2001. BATTLE also recovered 98 stolen vehicles worth an estimated \$2 million dollars. The task force officers also provided vehicle theft training for patrol officers at local police departments. In addition, BATTLE officers presented anti-car theft presentations to community organizations and neighborhood watch groups.



Another recovered stolen auto through task force efforts.

KANE COUNTY AUTO THEFT TASK FORCE

Grantee: Elgin Police Department

Type of Program: Multi-jurisdictional vehicle theft task force

Amount Awarded for 2001: \$377,043

Expenditures

Personnel-77.6%	Commodities-1%
Travel-0.9%	Contractual-16.2%
Equipment-0.6%	Other-3.7%

The Kane County Auto Theft Task Force (KCAT) serves the Kane County area. Intelligence gathering, surveillance, and monitoring areas prone to thefts are central to the unit's activities. In 2001, KCAT launched 83 investigations, resulting in 90 arrests and referred 66 for prosecution. The work of the KCAT officers led to 64 convictions in 2001. In addition, the task force recovered 46 vehicles worth an estimated \$564,174.

In 2001, Kane County Auto Theft Task Force officers provided training to assigned investigators. The specialized training enhanced the expertise of the KCAT investigators. KCAT officers conducted

Since 1991, more than 8,000 persons have been arrested for motor vehicle theft related offenses.

¹⁰ The 2001 prosecution data in this report covers only March through December of 2001. Prosecution data was not collected prior to March of 2001.

¹¹ Due to the time lapse between an arrest and a conviction, the number of convictions during a year does not directly reflect the number of arrests during the same year.

The Council's seven vehicle theft task forces consist of officers from both local and state law enforcement agencies.

several motor vehicle theft trainings for patrol officers, as well as training for Illinois crime analysts and members of the public who attended citizen police academies.

METRO EAST AUTO THEFT TASK FORCE

Grantee: Belleville Police Department
Type of Program: Multi-jurisdictional vehicle theft task force
Amount Awarded for 2001: \$609,172

Expenditures

Personnel-80.8%	Commodities-1.1%
Travel-0.2%	Contractual-17.9%

The Metro East Auto Theft Task Force operates in Madison and St. Clair Counties. The officers are faced with unique problems in the East St. Louis metropolitan area. With 11 local police officers on special assignment, the task force battles vehicle theft offenders who cross the Illinois-Missouri border. The task force works closely with the police departments of St. Louis and St. Louis County. A lieutenant from the Secretary of State's Department of Police heads the task force.

In 2001, the Metro East Auto Theft Task Force opened 653 investigations resulting in 307 arrests. The work of the officers resulted in 98 convictions in 2001. The unit recovered 377 vehicles worth an estimated \$2.5 million. The task force also assisted the Motor Vehicle Theft Training Program with several motor

vehicle theft trainings for investigators and patrol officers in 2001.

NORTHERN ILLINOIS AUTO THEFT TASK FORCE

Grantee: Winnebago County Sheriff's Office
Type of Program: Multi-jurisdictional vehicle theft task force
Amount Awarded for 2001: \$401,563

Expenditures

Personnel-84.3%	Commodities-0.6%
Travel-0.5%	Contractual-14.4%
Equipment-0.2%	

The Northern Illinois Auto Theft Task Force covers Winnebago and Boone Counties and is directed by a lieutenant from the Secretary of State's Department of Police. The task force conducts criminal investigations, gathers intelligence, processes recovered vehicles, apprehends offenders, and shares information with all law enforcement agencies in both of the counties.

In 2001, the Northern Illinois Auto Theft Task Force launched 292 investigations, resulting in 88 arrests and 209 convictions. The task force also recovered 199 stolen vehicles worth an estimated \$1.2 million.

STATE AND LOCAL AUTO THEFT ENFORCEMENT

Grantee: City of Peoria Police Department
Type of Program: Multi-jurisdictional vehicle theft task force
Amount Awarded for 2001: \$101,093

Expenditures

Personnel-46.7%	Commodities-2.5%
Travel-1.9%	Contractual-46.2%
Other-2.7%	

The State and Local Auto Theft Enforcement Task Force (SLATE) serves Peoria County. During 2001, its second year of operation, SLATE launched 214 investigations, resulting in 230 arrests. The work of SLATE officers led to 30 convictions. In addition, the task force recovered 59 vehicles worth an estimated \$420,565.

During 2001, the task force officers identified areas with high numbers of auto thefts and attended several neighborhood watch meetings in these areas to educate residents about motor vehicle theft prevention techniques. SLATE officers assisted the Motor Vehicle Theft Training Program with several motor vehicle theft trainings for investigators and patrol officers in 2001. The task force officers also conducted presentations on vehicle theft



SLATE members at a local community function.

prevention for the Peoria Citizen Police Academy. The officers participated in the Peoria Auto Show held at the Peoria Civic Center.

SOUTH SUBURBAN AUTO THEFT INTERDICTION NETWORK

Grantee: Illinois State Police

Type of Program: Multi-jurisdictional vehicle theft task force

Amount Awarded for 2001: \$803,800

Expenditures

Personnel-76% Commodities-1.3%

Travel-0.5% Contractual-22.2%

The South Suburban Auto Theft Interdiction Network (SSATIN) serves the south and west suburban Cook County metropolitan area. From 1992 to 1999, SSATIN operated in 53 communities within suburban Cook County. In 2000, the task force expanded its service area to include 18 additional communities in Cook County's western suburbs, an area known as the I-290 Eisenhower Corridor. The unit utilizes numerous theft detection techniques, such as surveillance and informant development.

In 2001, SSATIN conducted 316 investigations that resulted in 279 arrests and 36 convictions. The unit recovered 308 stolen vehicles worth an estimated \$6.7 million. Also in 2001, the officers conducted six 2-hour patrol officer trainings and sponsored two VIN etching programs in Southern Cook County.

TRI-COUNTY AUTO THEFT TASK FORCE

Grantee: Joliet Police Department

Type of Program: Multi-jurisdictional vehicle theft task force

Amount Awarded for 2001: \$756,575

Expenditures

Personnel-92% Equipment-3%

Commodities-0.6% Travel-0.3%

Contractual-4.1%

The Tri-County Auto Theft Task Force serves the Joliet metropolitan area, including Will,



Kankakee, and Grundy counties. The task force links the efforts of the Illinois State Police, the sheriff's offices of Will, Grundy, and Kankakee Counties, and the police departments of Joliet, Bolingbrook, Romeoville, and Kankakee. The expertise and resources of multiple law enforcement agencies maximizes the task force officers' ability to investigate and prosecute auto theft in the Joliet metropolitan area.

In 2001, the task force initiated 292 investigations, resulting in 120 arrests. The work of the Tri-County officers led to 45 convictions in 2001. The unit recovered 269 vehicles that were worth an estimated \$3.3 million. Also in 2001, the task force officers conducted several seminars on vehicle theft prevention for the Bolingbrook and Romeoville Citizen's Police Academies and the Kankakee County Career Center. They also taught auto theft courses for patrol officers at the Joliet and Bourbonnais Police Departments. In addition, the task force officers coordinated and attended several intelligence meetings with local law enforcement personnel.

Special Audit Team members at work.



Tri-County staff member busy with administrative duties.

Specialized Prosecution Program

MOTOR VEHICLE THEFT PROSECUTIONS UNIT

Grantee: Office of the Cook County State's Attorney

Type of Program: Vehicle theft prosecutions unit

Amount Awarded for 2001: \$594,290

In 2001, 1,356 vehicles valued at \$16,629,944 were recovered through Council funded activities.

Expenditures

Personnel-96% Equipment-2.9%
 Contractual-0.2% Other-0.4% Travel-0.5%

In addition to supporting prosecutors dedicated to each task force, the Council funds a prosecution unit located within the Cook County State's Attorneys Office. The unit is comprised of one supervising and three specially trained prosecutors, an administrative assistant, and two part-time law clerks. The four senior attorneys prosecute career auto thieves as well as individuals involved in chop shop operations, insurance fraud, organized street gang operations, carjacking, and the illegal activities of rebuilders and scrap dealers. The prosecution team vertically prosecutes targeted vehicle theft cases and related crimes in Cook County. Vertical prosecution is when an attorney is assigned to a case from submission through trial, a method considered critical for prosecuting vehicle theft cases. Two State's Attorney's investigators augment police work by tracking documents, locating witnesses, and conducting detailed background investigations. The specialized unit also provides to officers important legal expertise on consensual wiretaps.

In 2001, 150 vehicle theft-related cases were referred for prosecution; five of these cases required additional follow-up investigation by the unit. There were 127 cases that resulted in sentencing in 2001 (which include some cases initiated in 1999 and 2000). There were a total of 189 defendants prosecuted by the unit in 2001. Ninety-eight defendants were sentenced to prison or jail, 17 were sentenced to felony probation, and the remaining 12 received other minor dispositions. Restitution and court costs totaling \$63,740 were also ordered.

processors

Amount Awarded for 2001: \$1,030,000

Expenditures

Personnel-97% Contractual-2.9% Other-0.1%

The Secretary of State Special Audit Teams Program focuses on policing the 'marketplace' for stolen vehicles and parts using special audit teams. There were four teams in operation during 2001, located in Chicago, Rockford, Peoria, and East St. Louis. The teams travel throughout Illinois, monitoring salvage yards, rebuilders, repairers, insurance auctions, and scrap processors for compliance with regulations governing record-keeping of vehicle and vehicle part transactions. The teams are comprised of 15 auditors and 4 supervisors, as well as 7 clerical personnel and 1 fiscal officer, who are supervised by 2 administrators and the program director.

In-depth, intensive audits are designed to:

- Reduce the number of stolen vehicles disposed of through salvage yards, rebuilders, repairers and scrap processors;
- Reduce the number of stolen and contraband essential vehicle parts sold to and through these businesses;
- Eliminate chop shop, retagging, and other organized theft operations in the state; and,
- Track the flow of salvage titles and force their conversion to junking certificates when appropriate.

In 2001, the teams performed 2,096 audits involving 53,761 vehicles and 7,080 essential vehicle parts. In all, 70 stolen vehicles and 420 contraband (illegally imported) vehicles were recovered, for a total estimated value of \$3,497,025. Of the 10,973 essential parts inspected, 40 were found to be stolen and 28 were contraband.

The work of the Audit Teams also resulted in:

- Inspection of 2,618 certificates of title and 1,862 salvage certificates;

Processing a recovered stolen vehicle.



Special Investigative Activities

SECRETARY OF STATE SPECIAL AUDIT TEAMS PROGRAM

Grantee: Secretary of State, Department of Police

Type of Program: Statewide auditing of salvage yards, rebuilders, repairers, and scrap

- Issuance of 400 violation letters;
- Voluntary surrender by 6 businesses of their licenses; and,
- Revocation of 3 licenses by the Audit Teams.

Infrastructure Support for Law Enforcement

MOTOR VEHICLE THEFT INTELLIGENCE CLEARINGHOUSE

Grantee: Illinois State Police

Type of Program: Statewide motor vehicle theft information clearinghouse

Amount Awarded for 2001: \$255,546

Expenditures

Personnel-99% Contractual-1%

The Motor Vehicle Theft Intelligence Clearinghouse provides analytical support for motor vehicle theft task forces and the Illinois law enforcement community. The unit consists of three criminal intelligence analysts and one clerical staff person, and is directed by a master sergeant from the Illinois State Police.

During 2001, the Clearinghouse received 284 requests for information, crime analysis, mapping, charting, case assistance, and the production of strategic and tactical products. These requests included 209 inquiries from auto theft task forces, 22 from the Illinois State Police, 11 from federal agencies, 20 from local law enforcement, and 22 from other criminal justice entities. The requests varied from simple name checks and title histories to the production of regional motor vehicle theft assessments and analyses of auto theft conspiracy cases. Clearinghouse staff also made several presentations explaining their services and resources for four State Farm Auto Theft Investigative groups and five Motor Vehicle Theft Investigator Training Classes in Illinois. The staff also visited six of the Council's task forces and gave a slide show presentation on the resources available for the officers. Other activities during 2001 included participation at the Peoria Auto Show and the Illinois State

Fair where Clearinghouse staff distributed motor vehicle theft prevention information.

CHICAGO POLICE DEPARTMENT MOTOR VEHICLE THEFT PREVENTION DATA AND ANALYSIS

Grantee: City of Chicago, Department of Police

Type of Program: Information and technology support

Amount Awarded for 2001: \$120,490

Expenditures

Personnel-100%

The Chicago Police Department Motor Vehicle Theft Prevention Data and Analysis Team proposed to collect, analyze, and provide vehicle theft information on local law enforcement, other State and Federal law enforcement agencies, and the Council's auto theft task forces. The team also planned to analyze vehicle theft data that would identify auto theft trends and patterns throughout the 25 police districts of Chicago.

INSURANCE VEHICLE EXPENSE FUND PROGRAM

Grantee: Illinois Anti-Car Theft Committee

Type of Program: Maintenance of insurance industry-loaned vehicles

Amount Awarded for 2001: \$90,000

The Motor Vehicle Theft Intelligence Clearinghouse provides analytical support for motor vehicle theft task forces and the Illinois law enforcement community.

Property recovered through task force investigation.



In 2001, the Council's Law Enforcement training program organized and conducted five 36-hour auto theft investigator courses, and 19 one-day training sessions for patrol officers.

Expenditures

Contractual-100%

To support Council-funded law enforcement efforts, insurance companies have loaned vehicles for use by Council-funded programs. The vast majority of these vehicles are recovered stolen vehicles obtained from the insurance salvage pools in the Chicago metropolitan area. Program funds are used to repair these vehicles and to obtain required Illinois titles and license plates.

The Council, through the Illinois Anti-Car Theft Committee, has designated trust funds for repairing or purchasing parts for these vehicles to make them safe for operation by the task forces. The loaned vehicles are used by task force officers for surveillance and undercover activities.

Since the inception of the Vehicle Expense Fund in 1992, 28 different insurance companies have loaned 295 vehicles to Council funded programs. During 2001, the expenditures from the fund totaled \$90,000. There were 93 vehicles in use during this year, which includes vehicles loaned to programs in 2000. Of the \$90,000 in the fund, approximately \$7,744 was used for the cost of licensing and registering vehicles.

MOTOR VEHICLE THEFT INVESTIGATION TRAINING PROGRAM

Grantee: Illinois State Police Academy

Type of Program: Statewide officer motor vehicle investigation training

Amount Awarded for 2001: \$87,279

Expenditures

Personnel-5.3%	Equipment-3.4%
Commodities-2.2%	Travel-17.2%
Contractual-71%	Other-0.9%

The Motor Vehicle Theft Training Program is administered by the Illinois State Police. The program has developed training classes for investigators and patrol officers. The officers learn the important characteristics of vehicle theft cases and the various investigation techniques used in vehicle theft cases.

In 2001, the program organized and conducted five 36-hour auto theft investigator courses, targeting Council-funded vehicle theft task forces. Sixty-two officers participated in the investigator training. The program also conducted 19 one-day training sessions for patrol officers, with a total of 256 participants. The courses were held in locations throughout Illinois, including Belleville, the Chicago Area, Joliet, Marion, Peoria, Rockford, and Springfield. The training evaluation forms filled out by the 318 participants and the instructors reported favorable remarks from the group.

In December of 2001, the program hosted a 16-hour Motor Vehicle Theft Training Seminar. The training class featured instruction by Detective William E. Wagner from Washington D.C.'s Metropolitan Police Department's Violent Crimes Unit. The 39 attendees included officers from the Council's task forces, National Insurance Crime Bureau agents, Illinois State Police Vehicle Identification Officers, State Farm Insurance Companies, Fraud Investigators, and the Motor Vehicle Theft Training Program Instructors.



Attendees at auto theft investigators training.



The 36-hour auto theft investigator training class.

PROGRAMS/PARTICIPATING AGENCIES

South Suburban Auto Theft Interdiction Network

- 1 Illinois State Police Master Sergeant
- 9 Illinois State Police Investigators
- 1 Calumet City Officer
- 1 Chicago Heights Officer
- 1 Dolton Officer
- 1 Lansing Officer
- 1 Orland Park Officer
- 1 South Holland Officer
- 1 Steger Officer
- 2 National Insurance Crime Bureau Agents Investigators
- 1 Secretary of State Police Investigator
- 2 Clerical Staff

DuPage County Auto Theft Task Force (BATTLE)

- 1 Illinois State Police Master Sergeant
- 1 Illinois State Police Special Agent
- 2 DuPage County Deputies
- 1 Winfield Officer
- 1 Naperville Officer
- 1 Elmhurst Officer
- 1 DuPage County State's Attorney Investigator
- 1 DuPage County Assistant State's Attorney
- 1 Clerical Staff, DuPage County Sheriff's Office

Metro East Auto Theft Task Force

- 1 Secretary of State Lieutenant
- 1 Secretary of State Police Investigator
- 2 Illinois State Police Agents
- 1 Southern Illinois University, Edwardsville Officer
- 1 Cahokia Officer
- 1 Collinsville Officer
- 1 East St. Louis Officer
- 2 St. Clair County Deputies
- 1 Madison County Deputy
- 1 Fairview Heights Officer
- 1 Madison County Assistant State's Attorney
- 1 St. Clair County Assistant State's Attorney
- 1 Secretary - Secretary of State of Police
- 1 Clerical Staff

Kane County Auto Theft Task Force

- 1 Illinois State Police Master Sergeant
- 2 Elgin Officers
- 1 Aurora Officer
- 1 South Barrington Officer
- 1 Kane County Assistant State's Attorney
- 1 Clerical Staff

Tri-County Auto Theft Task Force

- 1 Illinois State Police Master Sergeant
- 1 Joliet Officer
- 1 Joliet Sergeant
- 1 Will County Deputy
- 1 Will County Sergeant
- 1 Bolingbrook Officer
- 1 Grundy County Deputy
- 1 Romeoville Officer
- 1 Kankakee City Officer
- 2 Kankakee County Deputies
- 1 Kankakee County Assistant State's Attorney
- 1 Will County Assistant State's Attorney
- 1 Clerical Staff, Will County Sheriff's Office
- 1 Clerical Staff, Will County State's Attorney's Office
- 1 National Insurance Crime Bureau Agent

Northern Illinois Auto Theft Task Force

- 1 Secretary of State Police Lieutenant
- 1 Secretary of State Police Investigator
- 1 Loves Park Officer
- 1 Cherry Valley Officer
- 2 Belvidere Officers
- 1 Winnebago County Deputy
- 1 Boone County Deputy
- 1 Winnebago County Assistant State's Attorney
- 1 Clerical Staff

State and Local Auto Theft Enforcement (SLATE)

- 1 Illinois State Police Investigations Commander
- 1 Illinois State Police Master Sergeant
- 1 Illinois State Police Investigator
- 1 Illinois Secretary of State Investigator
- 2 Peoria City Officers
- 1 Peoria County Deputy
- 1 Clerical Staff

Motor Vehicle Theft Prosecution Unit

- 4 Cook County Assistant State's Attorneys
- 2 Cook County State's Attorney Investigators
- 1 Administrative Assistant – Cook County
- 2 Law Clerks – Cook County

Secretary of State Special Audit Team

- 30 Secretary of State Department of Police personnel

Motor Vehicle Theft Intelligence Clearinghouse

- 3 Illinois State Police Intelligence Bureau Analysts
- 1 Illinois State Police Master Sergeant
- 1 Senior Administrator

Motor Vehicle Theft Investigation Training

- 2 Illinois State Police personnel

Insurance Vehicle Expense Program

- 1 Country Company Insurance personnel

Motor Vehicle Theft Prevention Data and Analysis

- 2 Chicago Police Department Staff

TOTAL

138 Personnel supported by or assigned to Council-funded programs

The Illinois State Police and the Secretary of State Department of Police assigned 7 task force directors and 26 other personnel to the programs without requesting funding. Likewise, the National Insurance Crime Bureau and Country Company Insurance did not receive compensation for the personnel assigned to the programs.





2001 Program Activity

Program	Investigations	Arrests	Convictions	Vehicles Recovered	Value
DuPage County Auto Theft Task Force	133	95	44	98	1,953,772
Kane-County Auto Theft Task Force	83	90	64	46	564,174
Metro East Auto Theft Task Force	653	307	98	377	2,544,859
Northern Illinois Task Force	292	88	131	199	1,170,673
South Suburban Auto Theft Interdiction Network	316	279	36	308	6,697,667
State and Local Auto Theft Enforcement	214	230	30	59	420,565
Tri-County Auto Theft Task Force	292	120	45	269	3,278,234
TOTAL	1,983	1,209	448	1,356	16,629,944

Motor Vehicle Theft Intelligence Clearinghouse	
<i>Source of Information Requests</i>	<i>Number</i>
Auto Theft Task Forces	209
Illinois State Police	22
Federal Agencies	11
Local Law Enforcement	20
Other Criminal Justice Agencies	22
TOTAL	284

Cook County Motor Vehicle Theft Prosecutions Unit	
Number of Indictments	150
Number of Investigations	5
Number of Defendants	189
Convictions	127
Felony Probation*	17
Prison/ Jail**	98
Other Dispositions	12
Restitution Costs	\$63,740

*The 98 defendants sentenced to prison or jail received a total of 551 years.

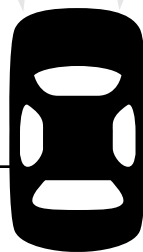
**The 17 defendants sentenced to felony probation received a total of approximately 49 years.

Secretary of State Audit Teams	
<i>Secretary of State Audit Teams</i>	
Audits conducted	2,096
Stolen vehicles recovered	70
Value of stolen vehicles	\$1,029,625
Contraband vehicles recovered	420
Value of contraband vehicles	\$2,467,400
Licenses revoked	3
Business licenses surrendered	6
Violation letters issued	400
Certificates of title inspected	2,618
Salvage certificates inspected	1,862

Motor Vehicle Theft Investigation Training	
Auto Theft Investigator Courses	5
<i>Participants</i>	62
Patrol Officer Training Sessions	19
<i>Participants</i>	256

Amount of funding authorized for calendar year 2001-2003

	2001	2002	2003
Secretary of State Special Audit Teams Program	\$1,030,000	\$1,060,900	\$1,092,727
Motor Vehicle Theft Prosecution Unit	\$594,290	\$609,138	\$628,624
Tri-County Auto Theft Task Force	\$756,575	\$767,466	\$788,984
Metro East Auto Theft Task Force	\$609,172	\$589,172	\$589,172
Kane County Auto Theft Task Force	\$377,043	\$386,375	\$398,383
South Suburban Auto Theft Interdiction Network	\$803,800	\$783,756	\$788,844
Insurance Vehicle Expense Fund Program	\$90,000	\$65,000	\$65,000
Motor Vehicle Theft Intelligence Clearinghouse	\$255,546	\$262,978	\$270,630
DuPage County Auto Theft Task Force (BATTLE)	\$409,553	\$421,839	\$434,494
Northern Illinois Auto Theft Task Force	\$401,563	\$411,715	\$422,172
Motor Vehicle Theft Investigation Training	\$87,279	\$83,252	\$84,665
Chicago Police Department Motor Vehicle Theft Prevention Data Analysis	\$211,236	\$123,954	\$127,523
State and Local Auto Theft Enforcement	\$101,093	\$92,476	\$93,900
Public Awareness/Innovations/Evaluation	\$334,996	\$394,109	\$448,426
TOTAL	\$6,062,146	\$6,052,130	\$6,233,544



Motor Vehicle Theft Prevention Trust Funds SFY 1991 to Date*

	SFY 1991	SFY 1992	SFY 1993	SFY 1994	SFY 1995	SFY 1996
REVENUE						
Insurance company payments	3,679,729	6,477,645	5,187,604	5,269,417	5,306,781	5,427,486
Beat Auto Theft Program revenue	0	0	0	0	1,590	4,625
Interest on Trust Fund	0	253,170	328,170	280,204	310,915	263,376
Subtotal	3,679,729	6,730,815	5,515,774	5,549,621	5,619,286	5,695,487
EXPENDITURES						
Transfers from Trust Fund	0	(100,000)	0	(736)	0	(11,441)
Administrative expenditures	(8,068)	(205,021)	(328,170)	(399,627)	(461,547)	(408,141)
Grantee expenditures	0	(70,000)	(4,944,103)	(6,757,497)	(8,227,976)	(5,779,684)
Subtotal	(8,068)	(375,021)	(5,272,273)	(7,157,860)	(8,689,523)	(6,199,266)
REVENUES vs. EXPENDITURES	3,671,661	6,355,794	243,501	(1,608,239)	(3,070,237)	(503,779)
TRUST FUND BALANCE	3,671,661	10,027,455	10,270,956	8,662,717	5,592,480	5,088,701

	SFY 1997	SFY 1998	SFY 1999	SFY 2000	SFY 2001	SFY 2002**	TOTALS
REVENUE							
Insurance company payments	5,554,590	5,599,576	5,697,892	5,836,878	5,762,127	44,415	59,844,140
Beat Auto Theft Program revenue	1,120	250	0	0	0	0	7,585
Interest on Trust Fund	222,737	240,659	236,526	286,037	343,728	139,210	2,904,732
Subtotal	5,778,447	5,840,485	5,934,418	6,122,915	6,105,855	183,625	62,756,457
EXPENDITURES							
Transfers from Trust Fund	0	(12,456)	0	(22,766)	(11,226)	(13,738)	(149,911)
Administrative expenditures	(329,393)	(268,400)	(179,910)	(151,500)	(254,219)	(124,800)	(3,118,796)
Grantee expenditures	(5,465,088)	(5,240,955)	(5,325,023)	(5,481,428)	(4,901,941)	(1,808,000)	(54,001,695)
Subtotal	(5,794,481)	(5,521,811)	(5,504,933)	(5,655,694)	(5,144,934)	(1,946,538)	(57,270,402)
REVENUES vs. EXPENDITURES	(16,034)	318,674	429,485	467,221	960,921	(1,762,913)	5,486,055
TRUST FUND BALANCE	5,072,667	5,391,341	5,820,826	6,288,047	7,248,968	5,486,055	

*SFY = State Fiscal Year = July 1st through June 30th.

**July 1, 2001 through December 31, 2001.

Numbers in parentheses are negative.



Acuity A Mutual Insurance Company
 Addison Insurance Company
 Affirmative Insurance Company
 All America Insurance Company
 All Nation Insurance Company
 Allied Property & Casualty Insurance Company
 Allmerica Financial Alliance Insurance Company
 Allmerica Financial Benefit Insurance Company
 Allstate Indemnity Company
 Allstate Insurance Company
 Allstate Property & Casualty Insurance Company
 Alpha Property & Casualty Insurance Company
 AMCO Insurance Company
 American & Foreign Insurance Company
 American Access Casualty Company
 American Ambassador Casualty Company
 American Bankers Insurance Company of Florida
 American Economy Insurance Company
 American Employers Insurance Company
 American Family Mutual Insurance Company
 American Fire & Casualty Company
 American Freedom Insurance Company
 American Heartland Insurance Company
 American Horizon Property & Casualty Insurance Company
 American Indemnity Company
 American International Insurance Company
 American International South Insurance Company
 American Manufacturers Mutual Insurance Company
 American Modern Home Insurance Company
 American Motorists Insurance Company
 American National General Insurance Company
 American National Property & Casualty Company
 American Premier Insurance Company
 American Protection Insurance Company
 American Security Insurance Company
 American Select Insurance Company
 American Service Insurance Company Incorporated
 American Standard Insurance Company of Wisconsin
 American States Insurance Company
 American States Preferred Insurance Company
 American Surety & Casualty Company
 American Union Insurance Company
 AMEX Assurance Company
 Amica Mutual Insurance Company
 Apollo Casualty Company
 Argonaut Insurance Company
 Armed Forces Insurance Exchange
 Assurance Company of America
 Atlanta Casualty Company
 Atlanta Specialty Insurance Company
 Atlantic Mutual Insurance Company
 Auto Club Family Insurance Company
 Auto-Owners Insurance Company
 Automobile Club Interinsurance Exchange
 Badger Mutual Insurance Company
 California Casualty Indemnity Exchange
 Centennial Insurance Company
 Central Mutual Insurance Company
 CGU Insurance Company of Illinois
 Charter Oak Fire Insurance Company
 Chicago Insurance Company
 Chicago Motor Club Insurance Company
 Chicago Mutual Insurance Company
 Chubb National Insurance Company
 Cincinnati Casualty Company
 Cincinnati Indemnity Company
 Cincinnati Insurance Company
 Citizens Insurance Company of America
 Citizens Insurance Company of Illinois
 Colonial Penn Franklin Insurance Company
 Colonial Penn Insurance Company
 Columbia Mutual Insurance Company
 Constitutional Casualty Company
 Contemporary American Insurance Company
 Continental Insurance Company
 Continental Western Insurance Company
 Country Casualty Insurance Company
 Country Mutual Insurance Company
 Country Preferred Insurance Company
 Dairyland Insurance Company
 Deerbrook Insurance Company
 Depositors Insurance Company
 Direct Choice Insurance Company
 Economy Fire & Casualty Company
 Economy Preferred Insurance Company
 Economy Premier Assurance Company
 Electric Insurance Company
 EMCASCO Insurance Company
 Empire Fire & Marine Insurance Company
 Employers Fire Insurance Company
 Employers Mutual Casualty Company
 Equity Mutual Insurance Company
 Erie Insurance Company
 Erie Insurance Exchange
 Farmers Automobile Insurance Association
 Farmers Union Cooperative Insurance Company
 Federal Insurance Company
 Federated Mutual Insurance Company
 Fidelity & Casualty Company of New York
 Fidelity & Guaranty Insurance Company
 Fidelity & Guaranty Insurance Underwriters
 Financial Indemnity Company
 First Liberty Insurance Company
 First National Insurance Company of America
 Foremost Insurance Company
 Foremost Property & Casualty Insurance Company
 Foremost Signature Insurance Company
 Founders Insurance Company
 Gallant Insurance Company
 Ge Auto & Home Assurance Company
 GEICO Casualty Company
 GEICO General Insurance Company
 GEICO Indemnity Company
 General Casualty Company of Illinois
 General Casualty Company of Wisconsin
 General Insurance Company of American
 Globe American Casualty Company
 Globe Indemnity Company
 Goodville Mutual Casualty Company
 Government Employees Insurance Company
 Grange Guardian Insurance Company
 Grange Mutual Casualty Company
 Granite State Insurance Company
 Great American Insurance Company
 Great American Insurance Company of NY
 Great American Security Insurance Company
 Great American Spirit Insurance Company
 Great Northern Insurance Company
 Grinnell Mutual Reinsurance Company
 Grinnell Select Insurance Company
 GuideOne America Insurance Company
 GuideOne Elite Insurance Company
 GuideOne Mutual Insurance Company
 GuideOne Specialty Mutual Insurance Company
 Hanover Insurance Company
 Harleysville Insurance Company
 Harleysville Lake States Insurance Company
 Hartford Accident & Indemnity Company
 Hartford Casualty Insurance Company
 Hartford Fire Insurance Company
 Hartford Insurance Company of Illinois
 Hartford Insurance Company of The Midwest
 Hartford Underwriters Insurance Company
 Hastings Mutual Insurance Company
 Hawkeye-Security Insurance Company
 Horace Mann Insurance Company
 Horace Mann Property & Casualty Insurance Company
 IGF Insurance Company
 Illinois EMCASCO Insurance Company
 Illinois Farmers Insurance Company
 Illinois National Insurance Company
 IMT Insurance Company Mutual
 Indiana Insurance Company
 Infinity Insurance Company
 Insura Property & Casualty Insurance Company
 Integon Casualty Insurance Company
 Integon Indemnity Corporation
 Integon National Insurance Company
 Interstate Bankers Casualty Company
 Iowa Mutual Insurance Company
 Jefferson Insurance Company
 Kemper Auto & Home Insurance Company

Liberty Insurance Corporation
 Liberty Mutual Fire Insurance Company
 Liberty Mutual Insurance Company
 Lumbermens Mutual Casualty Company
 Lyndon Property Insurance Company
 Madison Mutual Insurance Company
 Markel American Insurance Company
 Maryland Casualty Company
 Massachusetts Bay Insurance Company
 Medmarc Casualty Insurance Company
 Mendakota Insurance Company
 Merastar Insurance Company
 Mercury Indemnity Company of Illinois
 Mercury Insurance Company of Illinois
 Meridian Mutual Insurance Company
 Meridian Security Insurance Company
 Metropolitan Casualty Insurance Company
 Metropolitan General Insurance Company
 Metropolitan Group Property & Casualty Insurance Company
 Metropolitan Property & Casualty Insurance Company
 MIC General Insurance Corporation
 Mid-Century Insurance Company
 Midway Insurance Company of Illinois
 Millers Insurance Company
 Millers Mutual Insurance Association
 Milwaukee Safeguard Insurance Company
 Mutual Service Casualty Insurance Company
 National Alliance Insurance Company
 National Ben Franklin Insurance Company of Illinois
 National Farmers Union Property & Casualty
 National Farmers Union Standard Insurance Company
 National General Assurance Company
 National General Insurance Company
 National Heritage Insurance Company
 National Interstate Insurance Company
 Nationwide Assurance Company
 Nationwide General Insurance Company
 Nationwide Insurance Company of American
 Nationwide Mutual Fire Insurance Company
 Nationwide Mutual Insurance Company
 North Pointe Insurance Company of Illinois
 Northern Assurance Company of America
 Northern Insurance Company of New York
 Northland Insurance Company
 Northwestern National Casualty Company
 Oak Casualty Insurance Company
 Ohio Casualty Insurance Company
 Ohio Farmers Insurance Company
 Ohio Security Insurance Company
 Old Republic Minnehoma Insurance Company
 Omaha Property & Casualty Insurance Company
 Omni Indemnity Company
 Omni Insurance Company
 One Beacon Insurance Company
 Owners Insurance Company
 Pacific Indemnity Company
 Pekin Insurance Company
 Pennsylvania General Insurance Company
 Pharmacists Mutual Insurance Company
 Phoenix Insurance Company
 Potomac Insurance Company of Illinois
 Progressive Casualty Insurance Company
 Progressive Halcyon Insurance Company
 Progressive Premier Insurance Company of Illinois
 Progressive Specialty Insurance Company
 Progressive Universal Insurance Company of Illinois
 Property & Casualty Insurance Company of Hartford
 Providence Washington Insurance Company
 Prudential Commercial Insurance Company
 Prudential General Insurance Company
 Prudential Property & Casualty Insurance Company
 Redland Insurance Company
 Regent Insurance Company
 Republic Western Insurance Company
 Response Insurance Company
 Rockford Mutual Insurance Company
 Royal Indemnity Company
 Royal Insurance Company of American
 SAFECO Insurance Company of American
 SAFECO Insurance Company of Illinois
 SAFECO National Insurance Company
 Safeguard Insurance Company
 Safeway Insurance Company
 Sagamore Insurance Company
 Security National Insurance Company
 Selective Insurance Company of The Southeast
 Sentry Insurance A Mutual Company
 Shelby Insurance Company
 Shelter General Insurance Company
 Shelter Mutual Insurance Company
 Sirius America Insurance Company
 Southern Heritage Insurance Company
 Specialty Risk Insurance Company
 Springfield Fire & Casualty Company
 St Paul Fire & Marine Insurance Company
 St Paul Guardian Insurance Company
 St Paul Insurance Company of Illinois
 St Paul Mercury Insurance Company
 Standard Mutual Insurance Company
 State Auto National Insurance Company
 State Auto Property & Casualty Insurance Company
 State Automobile Mutual Insurance Company
 State Farm Fire And Casualty Company
 State Farm Mutual Auto Insurance Company
 Stonington Insurance Company
 Teachers Insurance Company
 The Cincinnati Indemnity Company
 Tokio Marine & Fire Insurance Company Ltd., US Branch
 Topa Insurance Company
 Travco Insurance Company
 Travelers Casualty Company of Connecticut
 Travelers Home & Marine Insurance Company
 Travelers Indemnity Company
 Travelers Indemnity Company of American
 Travelers Indemnity Company of Illinois
 Travelers Property & Casualty Insurance Company of Illinois
 Travelers Property Casualty Insurance Company
 Tri State Insurance Company of Minnesota
 Trinity Universal Insurance Company
 Trustguard Insurance Company
 Twin City Fire Insurance Company
 Underwriters At Lloyds London
 United Automobile Insurance Company
 United Equitable Insurance Company
 United Fire & Casualty Company
 United Fire & Indemnity Company
 United Security Insurance Company
 United Services Auto Association
 Unitrin Direct Insurance Company
 Universal Casualty Company
 Universal Underwriters Insurance Company
 US Fidelity & Guaranty Company
 USAA Casualty Insurance Company
 USAA General Indemnity Company
 Valiant Insurance Company
 Valor Insurance Company
 Victoria Fire & Casualty Company
 Victoria Select Insurance Company
 Vigilant Insurance Company
 Viking Insurance Company of Wisconsin
 Warner Insurance Company
 Washington International Insurance Company
 Wausau Underwriters Insurance Company
 West American Insurance Company
 West Bend Mutual Insurance Company
 Westfield Insurance Company
 Westfield National Insurance Company
 Windsor Insurance Company
 Worldwide Direct Auto Insurance Company
 Yasuda Fire & Marine Insurance Company of America
 York Insurance Company
 Yosemite Insurance Company
 Young American Insurance Company

The Illinois Motor Vehicle Theft Prevention Act

20 Illinois Compiled Statutes 4005

4005/1. Short title. This Act shall be known as the Illinois Motor Vehicle Theft Prevention Act.

4005/2. Purpose. The purpose of this Act is to prevent, combat and reduce motor vehicle theft in Illinois; to improve and support motor vehicle theft law enforcement, prosecution and administration of motor vehicle theft laws by establishing statewide planning capabilities for and coordination of financial resources.

4005/3. Definitions. As used in this Act:

(a) "Authority" means the Illinois Criminal Justice Information Authority.

(b) "Council" means the Illinois Motor Vehicle Theft Prevention Council, established within the Authority by this Act.

(c) "Trust Fund" means the Motor Vehicle Theft Prevention Trust Fund.

4005/4. Motor Vehicle Theft Prevention Council—Members—Chairman—Terms – Meetings. There is hereby created within the Authority an Illinois Motor Vehicle Theft Prevention Council, which shall exercise its powers, duties and responsibilities independently of the Authority. There shall be 11 members of the Council consisting of the Secretary of State or his designee, the Director of the Department of State Police, the State's Attorney of Cook County, the Superintendent of the Chicago Police Department, and the following 7 additional members, each of whom shall be appointed by the Governor: a state's attorney of a county other than Cook, a chief executive law enforcement official from a jurisdiction other than the City of Chicago, 5 representatives of insurers authorized to write motor vehicle insurance in this State, all of whom shall be domiciled in this State.

The Governor from time to time shall designate the Chairman of the Council from the membership. All members of the Council appointed by the Governor shall serve at the discretion of the Governor for a term not to exceed 4 years. The initial appointed members of the Council shall serve from January 1, 1991 until the third Monday in January, 1995 or until their successors are appointed. The Council shall meet at least quarterly.

4005/5. Compensation of members. Members of the Council shall serve without compensation. All

members shall be reimbursed for reasonable expenses incurred in connection with their duties.

4005/6. Personnel. The Executive Director of the Authority shall employ, in accordance with the provisions of the Illinois Personnel Code, such administrative, professional, clerical, and other personnel as may be required and may organize such staff as may be appropriate to effectuate the purposes of this Act.

4005/7. Powers and duties of council. The Council shall have the following powers, duties and responsibilities:

(a) To apply for, solicit, receive, establish priorities for, allocate, disburse, contract for, and spend funds that are made available to the Council from any source to effectuate the purposes of this Act.

(b) To make grants and to provide financial support for federal and State agencies, units of local government, corporations, and neighborhood, community and business organizations to effectuate the purposes of this Act.

(c) To assess the scope of the problem of motor vehicle theft, including particular areas of the State where the problem is greatest and to conduct impact analyses of State and local criminal justice policies, programs, plans and methods for combating the problem.

(d) To develop and sponsor the implementation of statewide plans and strategies to combat motor vehicle theft and to improve the administration of the motor vehicle theft laws and provide an effective forum for identification of critical problems associated with motor vehicle theft.

(e) To coordinate the development, adoption and implementation of plans and strategies relating to interagency or intergovernmental cooperation with respect to motor vehicle theft law enforcement.

(f) To promulgate rules or regulations necessary to ensure that appropriate agencies, units of government, private organizations and combinations thereof are included in the development and implementation of strategies or plans adopted pursuant to this Act and to promulgate rules or regulations as may otherwise be necessary to effectuate the purposes of this Act.

(g) To report annually, on or before April 1, 1992 to the Governor, General Assembly, and, upon request, to members of the general public on the

Council's activities in the preceding year.

(h) To exercise any other powers that are reasonable, necessary or convenient to fulfill its responsibilities, to carry out and to effectuate the objectives and purposes of the Council and the provisions of this Act, and to comply with the requirements of applicable federal or State laws or regulations; provided, however, that such powers shall not include the power to subpoena or arrest.

4005/8. Motor Vehicle Theft Prevention Trust Fund. (a) A special fund is created in the State Treasury known as the Motor Vehicle Theft Prevention Trust Fund, which shall be administered by the Executive Director of the Authority at the direction of the Council. All interest earned from the investment or deposit of monies accumulated in the Trust Fund shall, pursuant to Section 4.1 of the State Finance Act, be deposited in the Trust Fund.

(b) Money deposited in this Trust Fund shall not be considered general revenue of the State of Illinois.

(c) Money deposited in the Trust Fund shall be used only to enhance efforts to effectuate the purposes of this Act as determined by the Council and shall not be appropriated, loaned or in any manner transferred to the General Revenue Fund of the State of Illinois.

(d) Prior to April 1, 1991, and prior to April 1 of each year thereafter, each insurer engaged in writing private passenger motor vehicle insurance coverages which are included in Class 2 and Class 3 of Section 4 of the Illinois Insurance Code, [FN2] as a condition of its authority to transact business in this State, may collect and shall pay into the Trust Fund an amount equal to \$1.00, or a lesser amount determined by the Council, multiplied by the insurer's total earned car years of private passenger motor vehicle insurance policies providing physical damage insurance coverage written in this State during the preceding calendar year.

(e) Money in the Trust Fund shall be expended as follows:

To pay the Authority's costs to administer the Council and the Trust Fund, but for this purpose in an amount not to exceed ten percent in any one fiscal year of the amount collected pursuant to paragraph (d) of this Section in that same fiscal year.

(2) To achieve the purposes and objectives of this Act, which may include, but not be limited to, the

following:

(A) To provide financial support to law enforcement and correctional agencies, prosecutors, and the judiciary for programs designed to reduce motor vehicle theft and to improve the administration of motor vehicle theft laws.

(B) To provide financial support for federal and State agencies, units of local government, corporations and neighborhood, community or business organizations for programs designed to reduce motor vehicle theft and to improve the administration of motor vehicle theft laws.

(C) To provide financial support to conduct programs designed to inform owners of motor vehicles about the financial and social costs of motor vehicle theft and to suggest to those owners methods for preventing motor vehicle theft.

(D) To provide financial support for plans, programs and projects designed to achieve the purposes of this Act.

(f) Insurers contributing to the Trust Fund shall have a property interest in the unexpended money in the Trust Fund, which property interest shall not be retroactively changed or extinguished by the General Assembly.

(g) In the event the Trust Fund were to be discontinued or the Council were to be dissolved by act of the General Assembly or by operation of law, then, notwithstanding the provisions of Section 5 of the State Finance Act, any balance remaining therein shall be returned to the insurers writing private passenger motor vehicle insurance in proportion to their financial contributions to the Trust Fund and any assets of the Council shall be liquidated and returned in the same manner after deduction of administrative costs.

4005/12. Repealer. Sections 1 through 9 and Section 11 are repealed January 1, 2004.

(Source: Public Act 86-1408, effective January 1, 1991. Amended by Public Act 89-277, effective August 10, 1995 and Public Act 91-85, effective July 9, 1999.)

**Sheriff Charles R. Schofield
In Memoriam**

The members and staff of the Motor Vehicle Theft Prevention Council and all those committed to public safety in Illinois lost a colleague and friend when Sheriff Schofield passed away June 9, 2002. Council members and staff join with others throughout our state in extending sympathy to Sheriff Scofield's family.